

Frequently Asked Questions

(UPOBPAS)

Table of FAQs

1.	How to draw unitBUA for single dwelling unit? _____	3
2.	How to insert parking? _____	5
3.	How to draw and mark Rainwater Harvesting? _____	8
4.	How to mark staircase railing? _____	10
5.	How to draw OTS? _____	13
6.	Why Rear margin is not getting captured in report even if proposed? OR What are the direction reference circles? And how to draw them? _____	13

1. How to draw unitBUA for single dwelling unit?

Ans.:

Follow the below steps to draw the unit BUA for single dwelling unit:

- (1) Select unitBUA from the layer list.

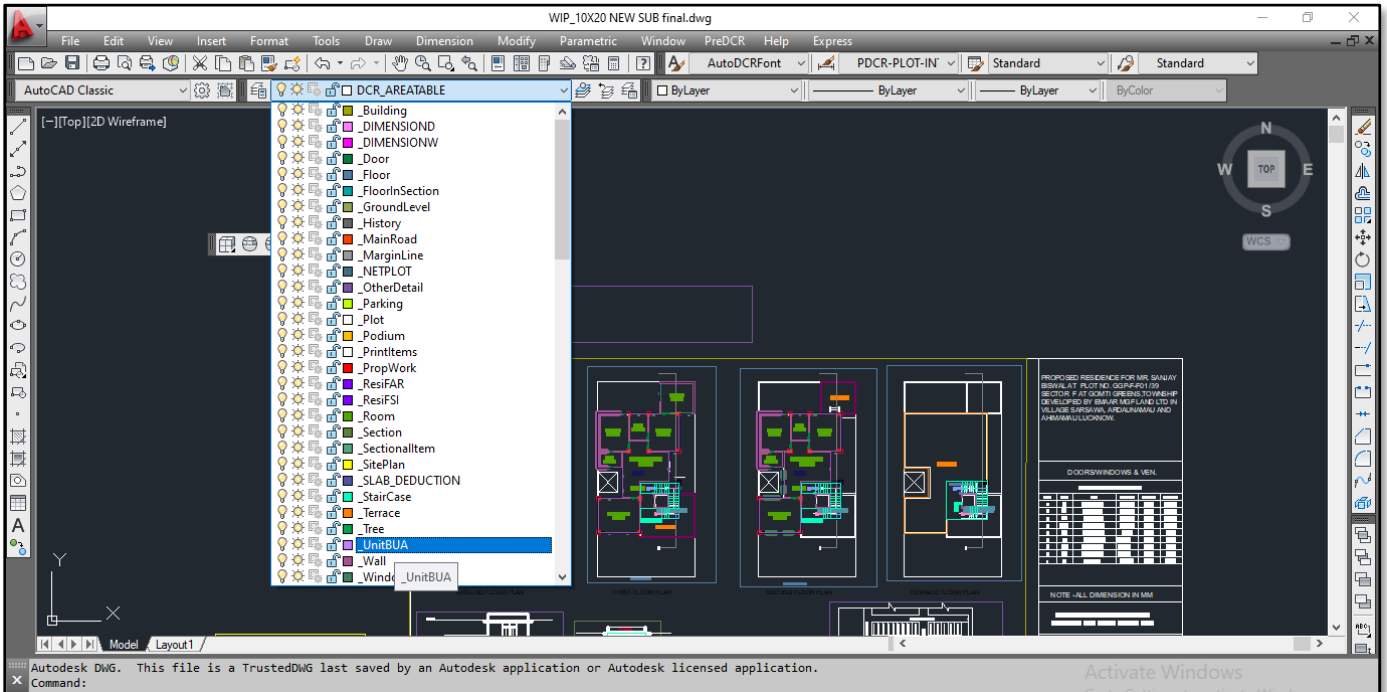


Figure 1: Selecting UnitBUA from the list

- (2) Draw unitBUA closed poly line on each floor.

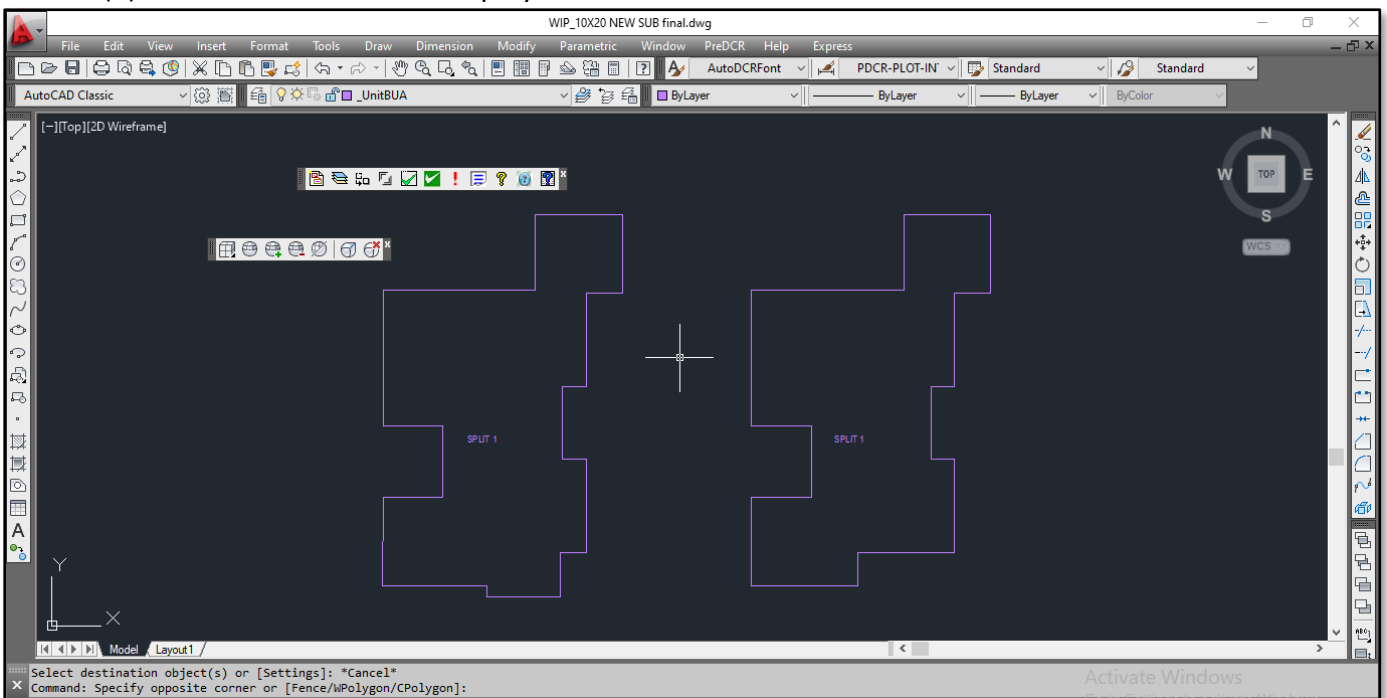


Figure 2: Drawing UnitBUA closed poly line on floor

Note : If you select **single dwelling unit**, you **cannot** mark the unit as **Normal (Default) Flat**.

- (3) To mark the unitBUA for single dwelling unit, mark all dwelling units as:
 - a. Click the PreDCR tab.
 - b. Select Mark → UnitBUA → Dwelling Unit

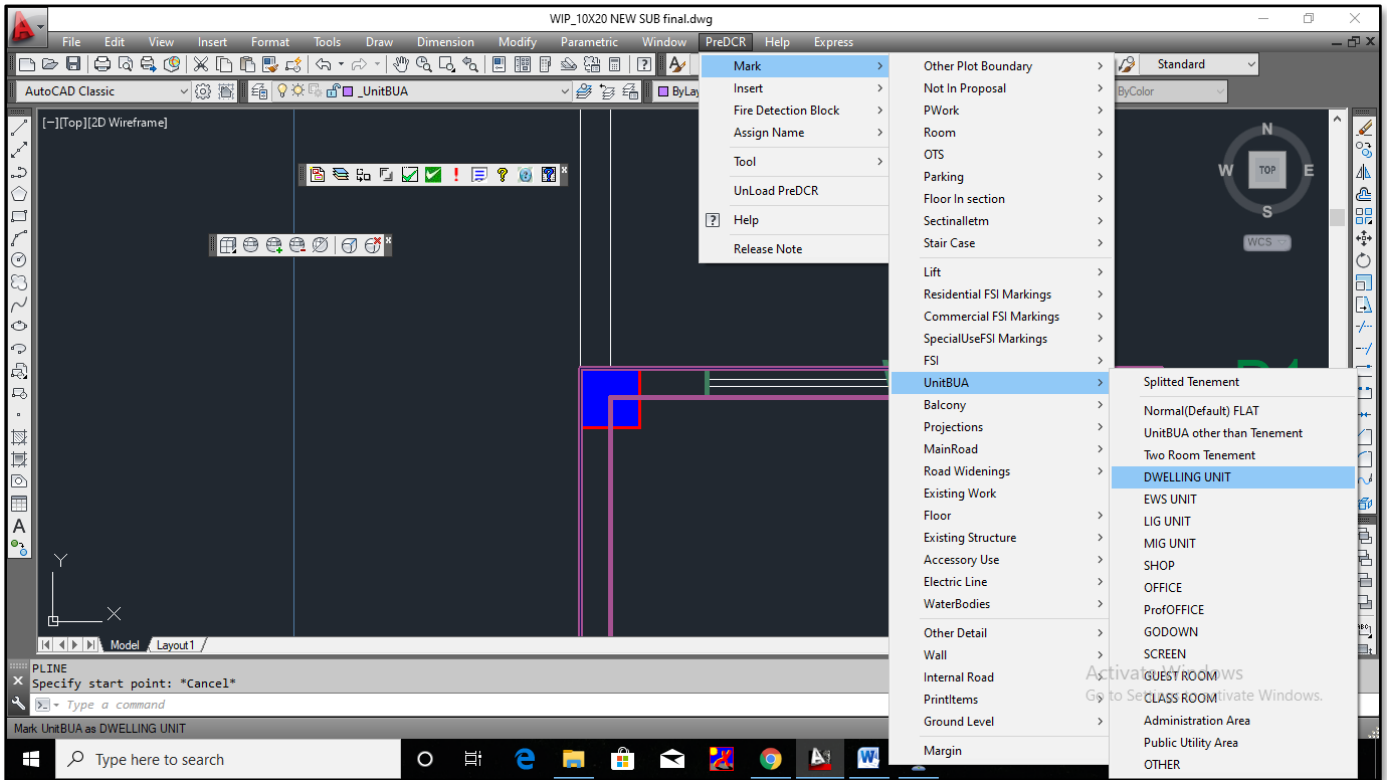


Figure 3: Marking the unitBUA for single dwelling unit

- c. (Now the color changes to blue.)

2. How to insert parking?

Ans.:

- Do not mark the parking from mechanical and multilevel parking for row house and single dwelling unit.

Follow the below steps to insert the parking in PreDCR:

- (1) Click the PreDCR tab.
- (2) Select Insert → Parking → Car (to show the car parking)

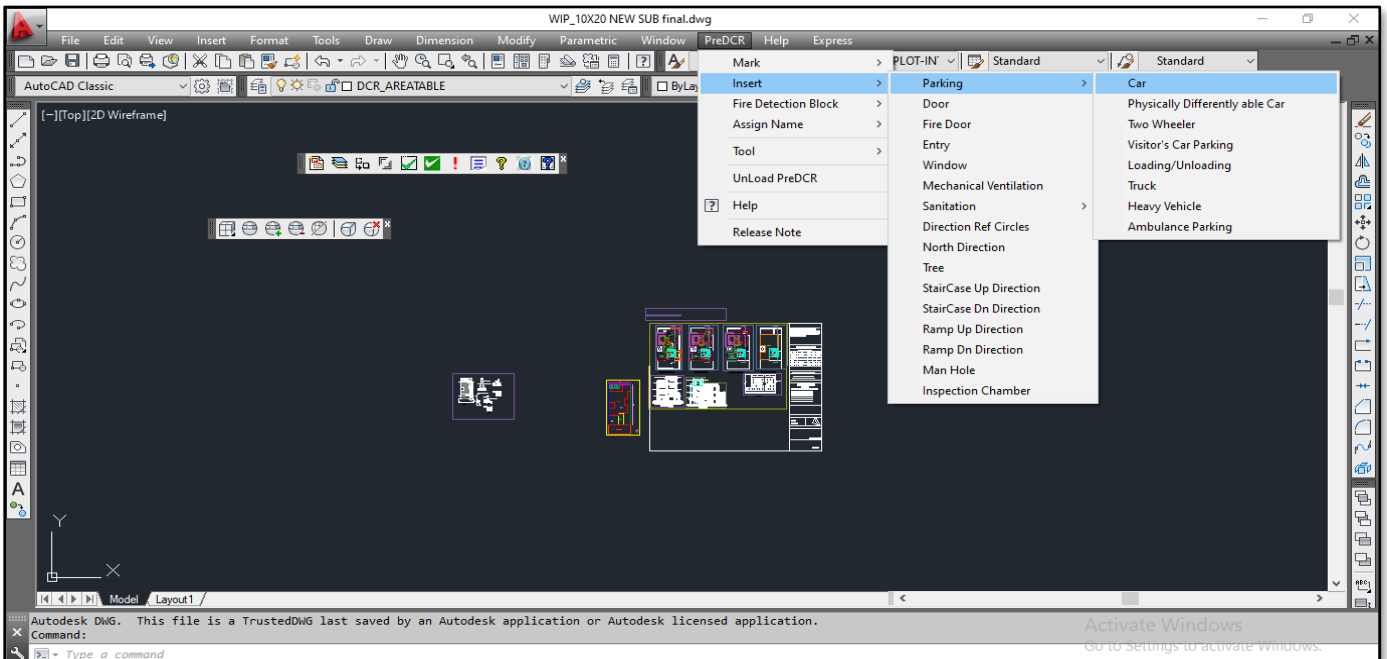


Figure 4: Car Parking

- (3) Select the floor or plot polyline.

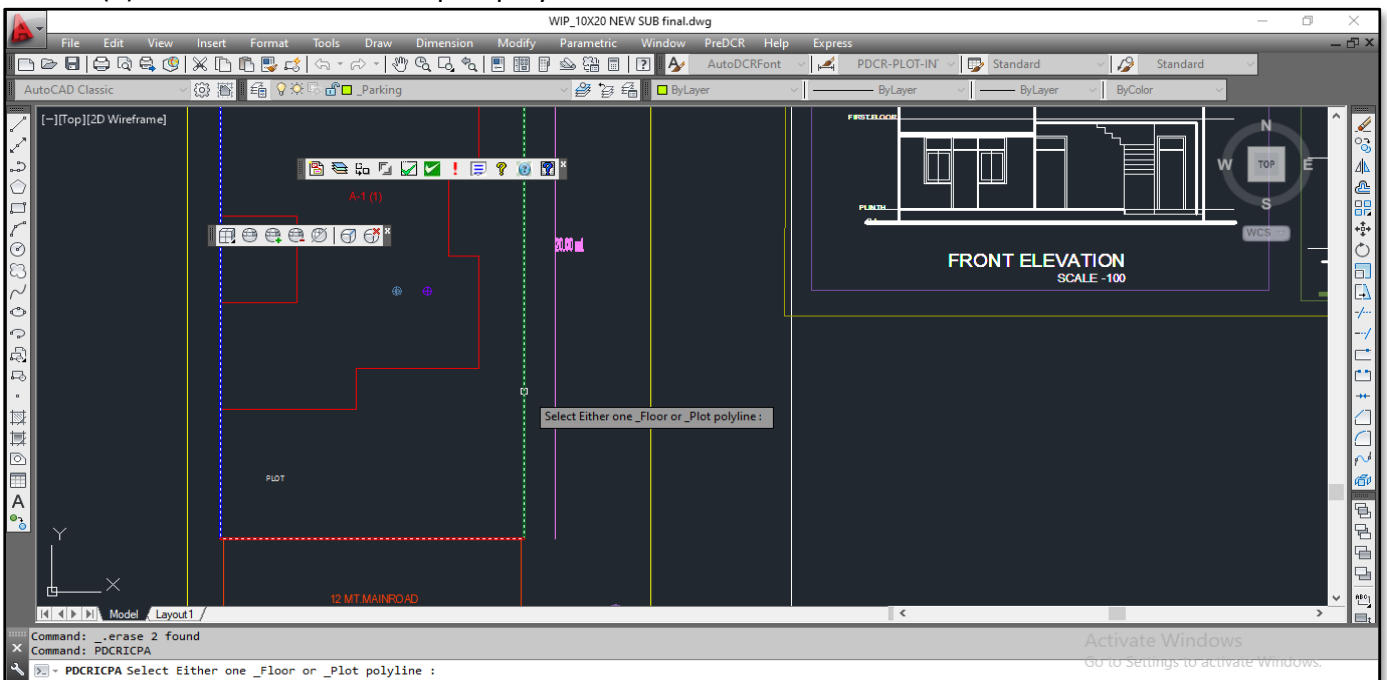


Figure 5: Selecting Plot Polyline

(4) Specify insertion point inside the plot polyline or floor (around) polyline.

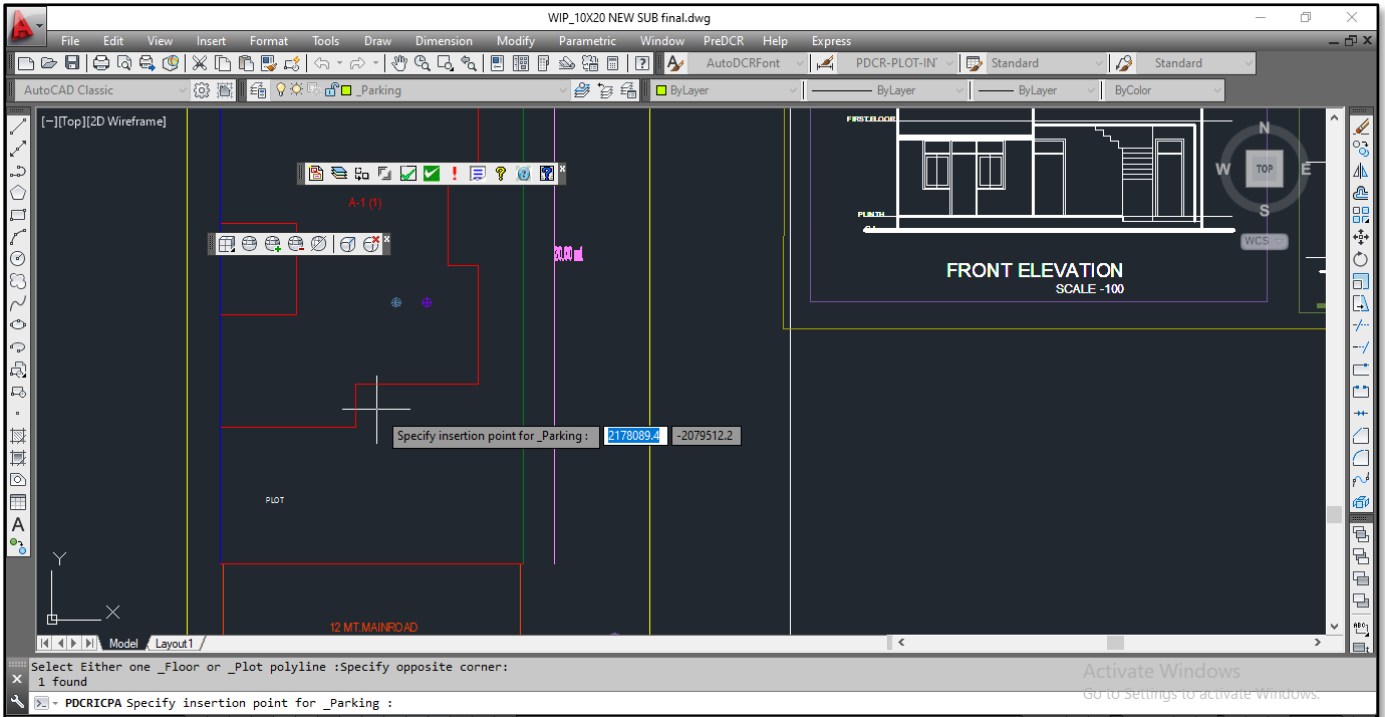


Figure 6: Specifying insertion point inside the plot polyline

(5) Specify number of parking (for example: "1")

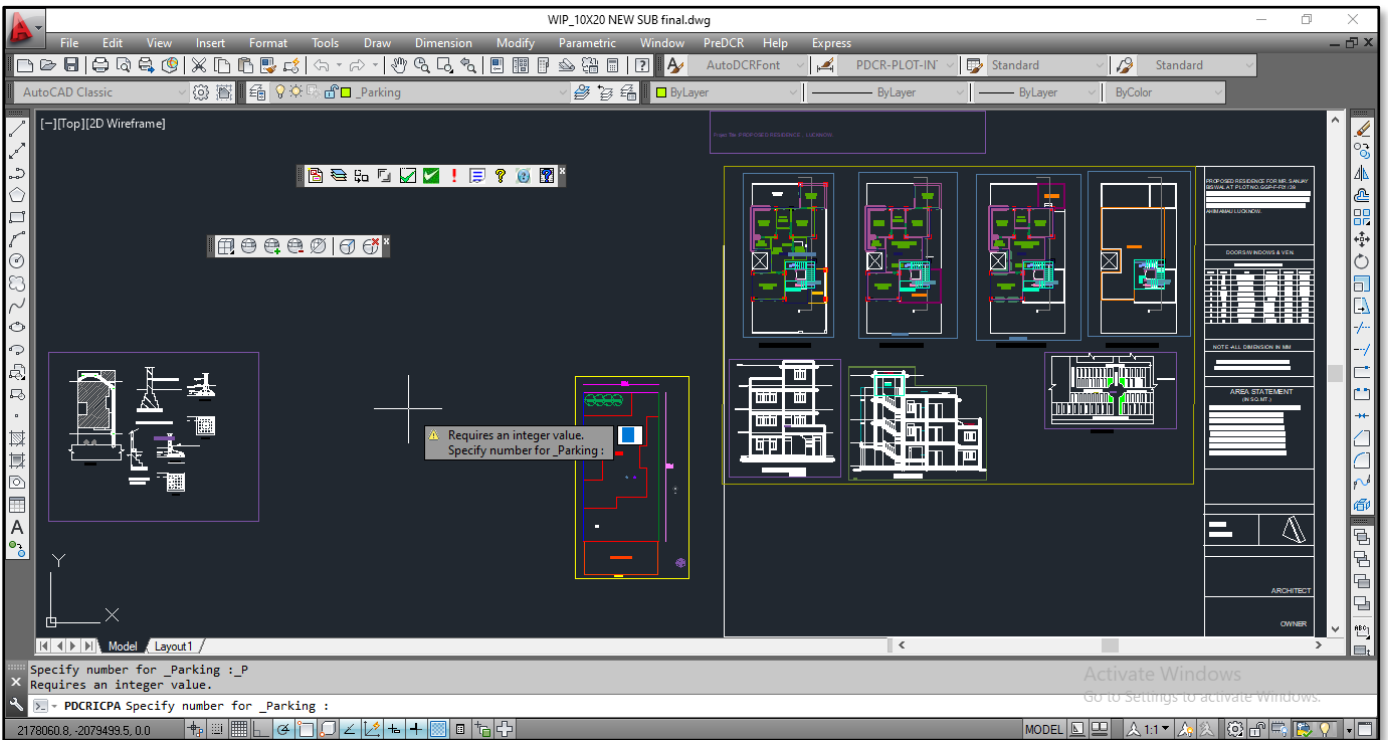


Figure 7: Specifying Number of Parking

(6) Click Enter.

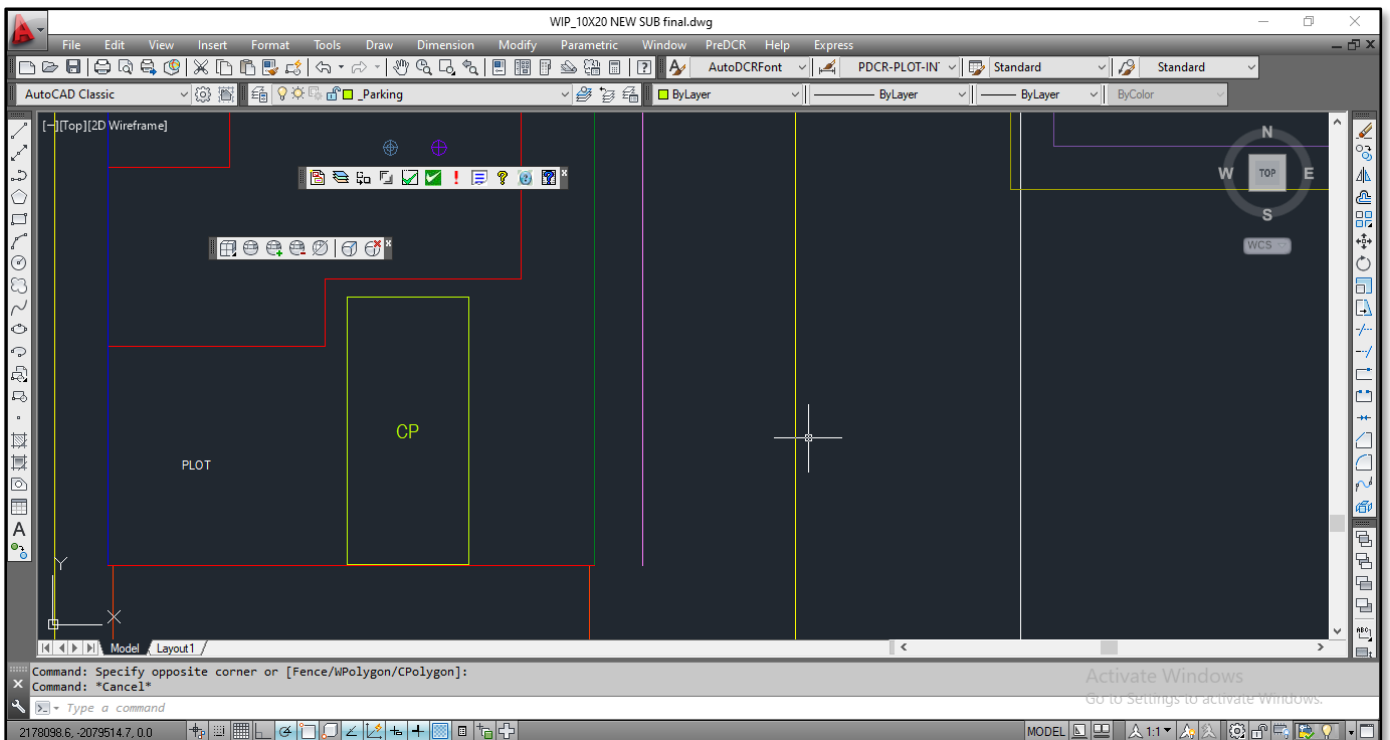


Figure 8: Insertion of car parking completed

(7) Follow the similar procedure to draw the other parking such as two wheeler visitors parking etc.

Note : Do not insert parking from PreDCR toolbar, mark → multilevel/mechanical → parking (default).
Use this marking only when multilevel /mechanical parking is provided.

3. How to draw and mark Rainwater Harvesting?

Ans.:

Follow the below steps to draw and mark Rainwater Harvesting:

- (1) Select Accessory use layer from the layer list.

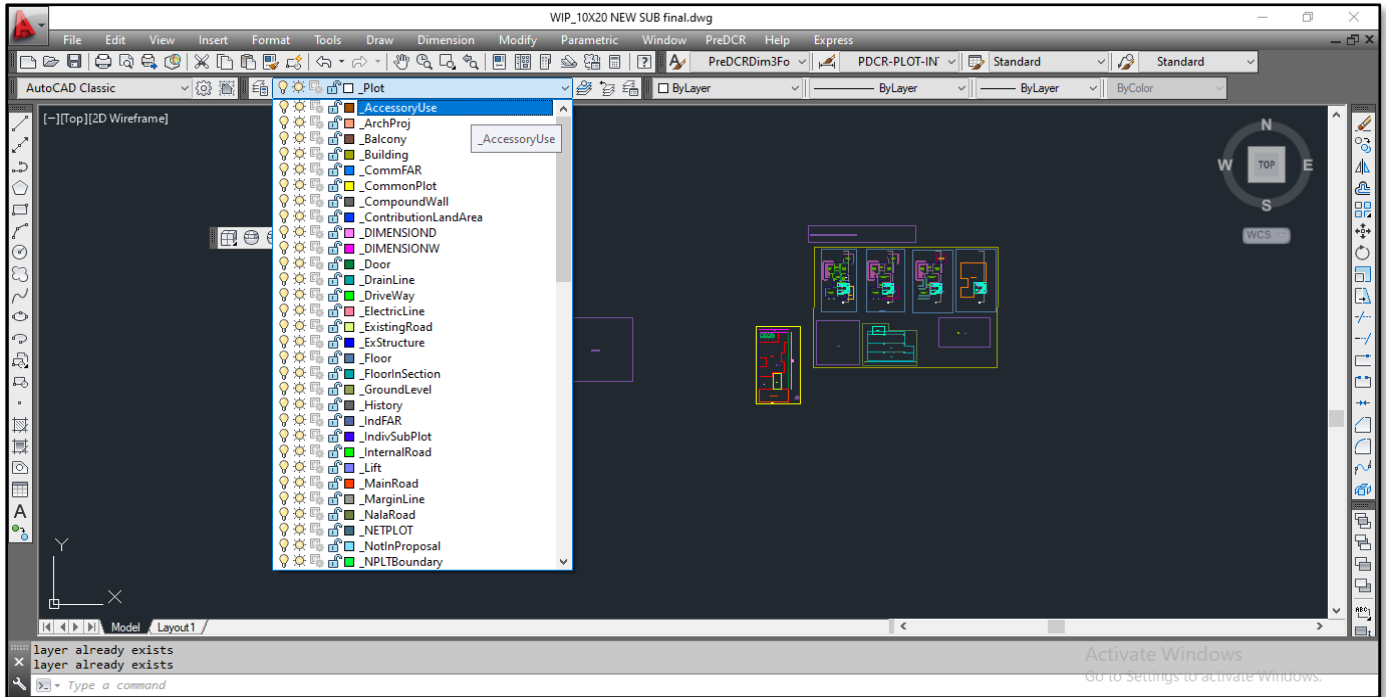


Figure 9: Selecting Accessory use layer from the list

- (2) Draw rainwater harvesting as provided in site plan on accessory use layer using closed poly line.
- (3) To mark the rainwater harvesting:
 - a. Click the PreDCR tab.
 - b. Select Mark → Accessory Use → Rain Water Harvesting

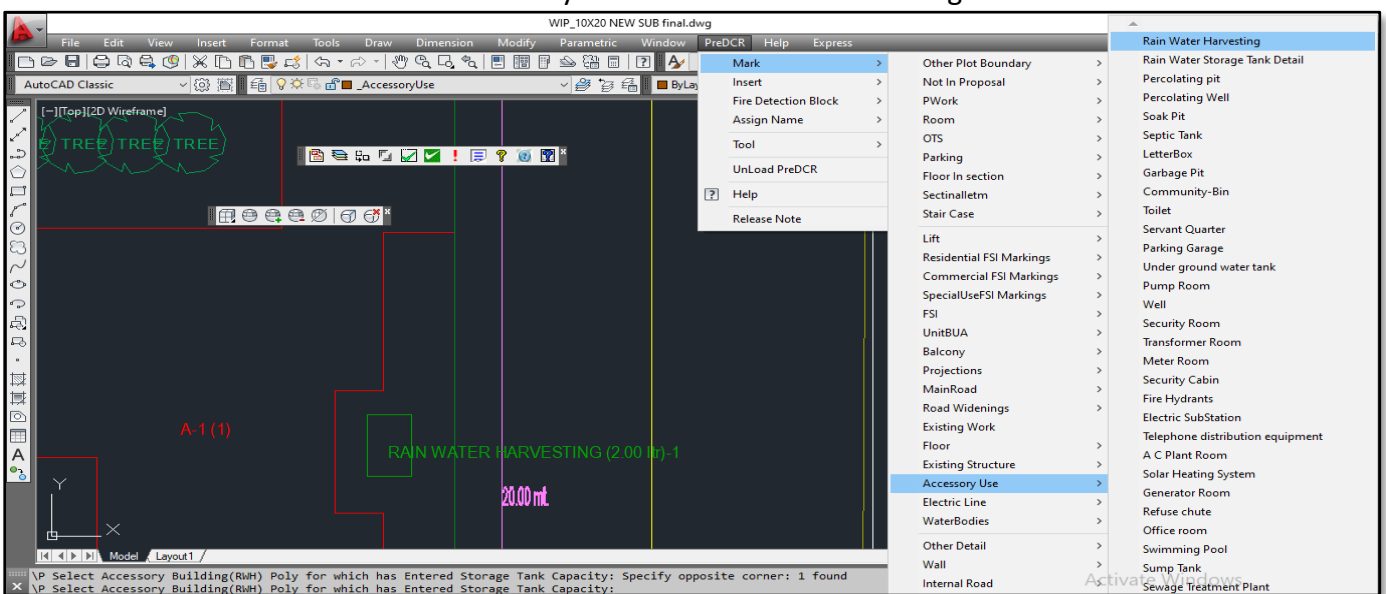


Figure 10: Selecting Rain water harvesting

- (4) Enter Storage Tank capacity (in liters).
- (5) Select Accessory building
- (6) Click Enter.
- (7) Now the RWH color changes to green.

4. How to mark staircase railing?

Ans.:

Follow the below steps to mark the staircase railing:

(1) Select staircase layer from the layer list.

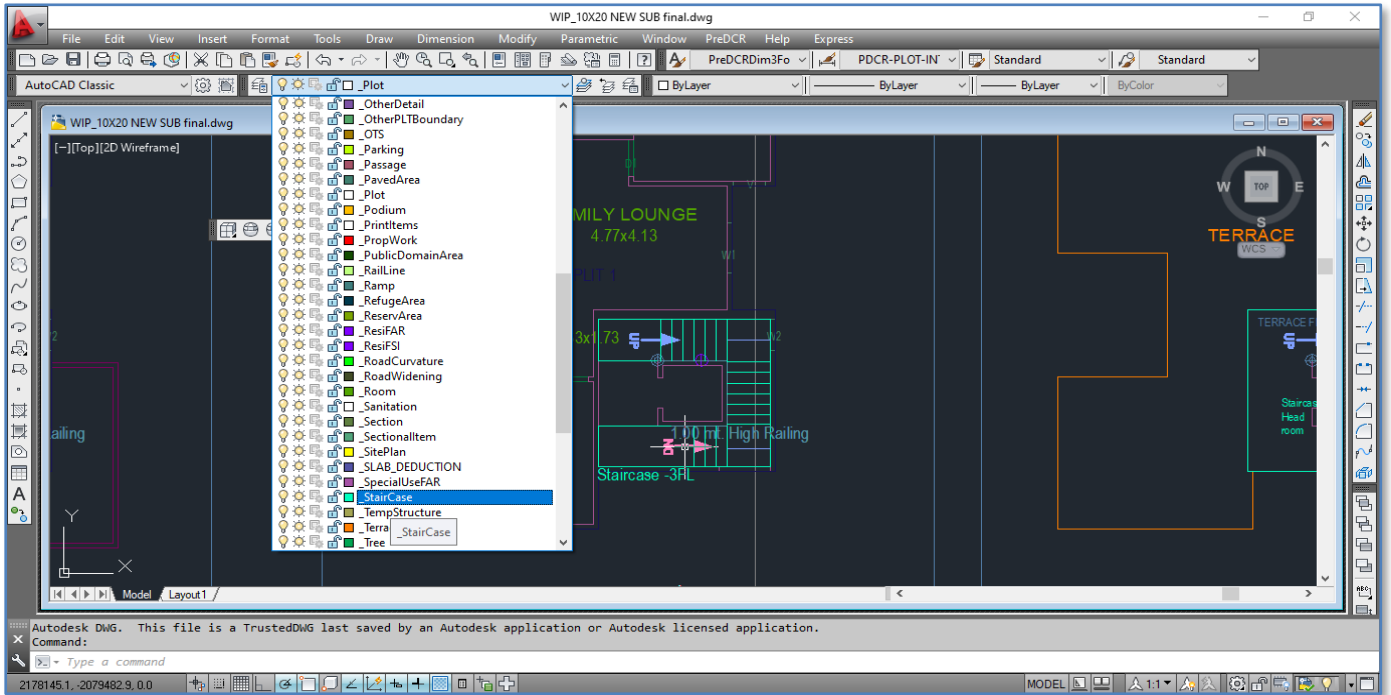


Figure 11: Selecting staircase layer

(2) Draw polyline as per railing provided.

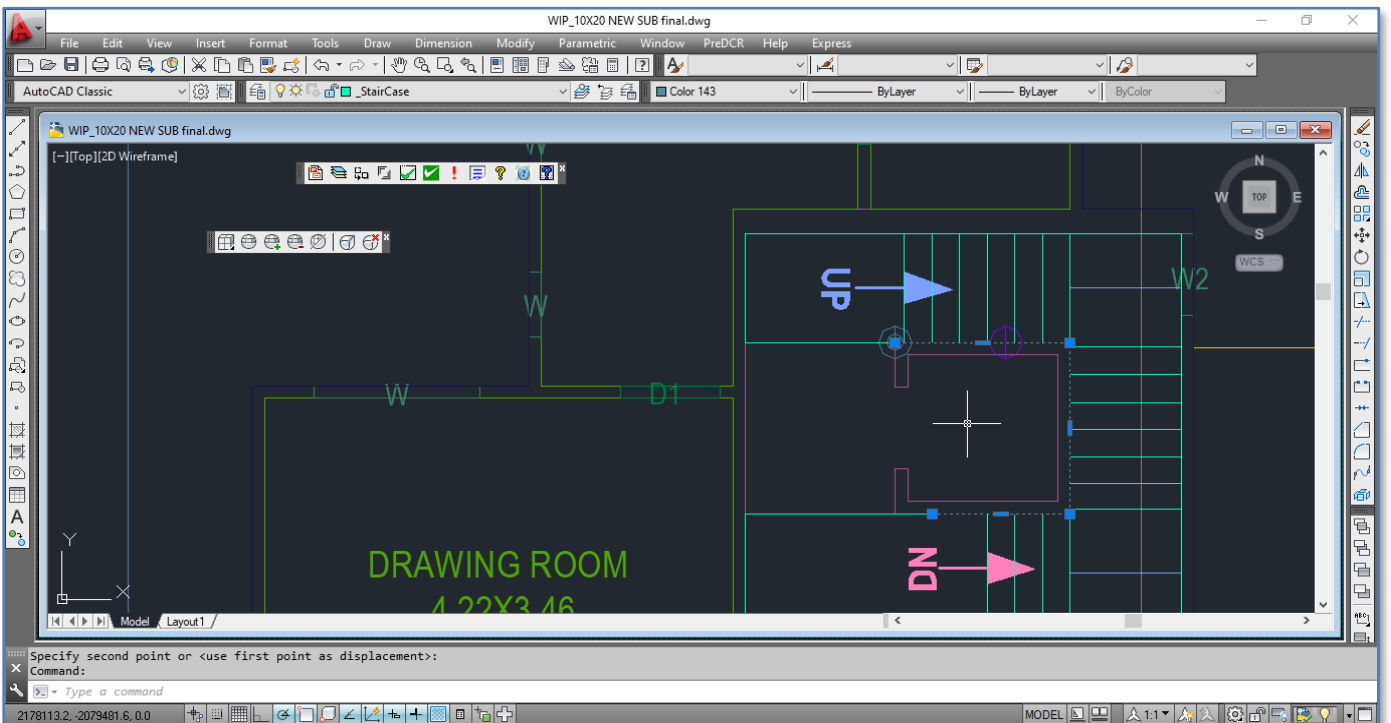


Figure 12: Drawing polyline

- (3) To mark railing,
 - a. Click the PreDCR tab.
 - b. Select Mark → Staircase → Railing

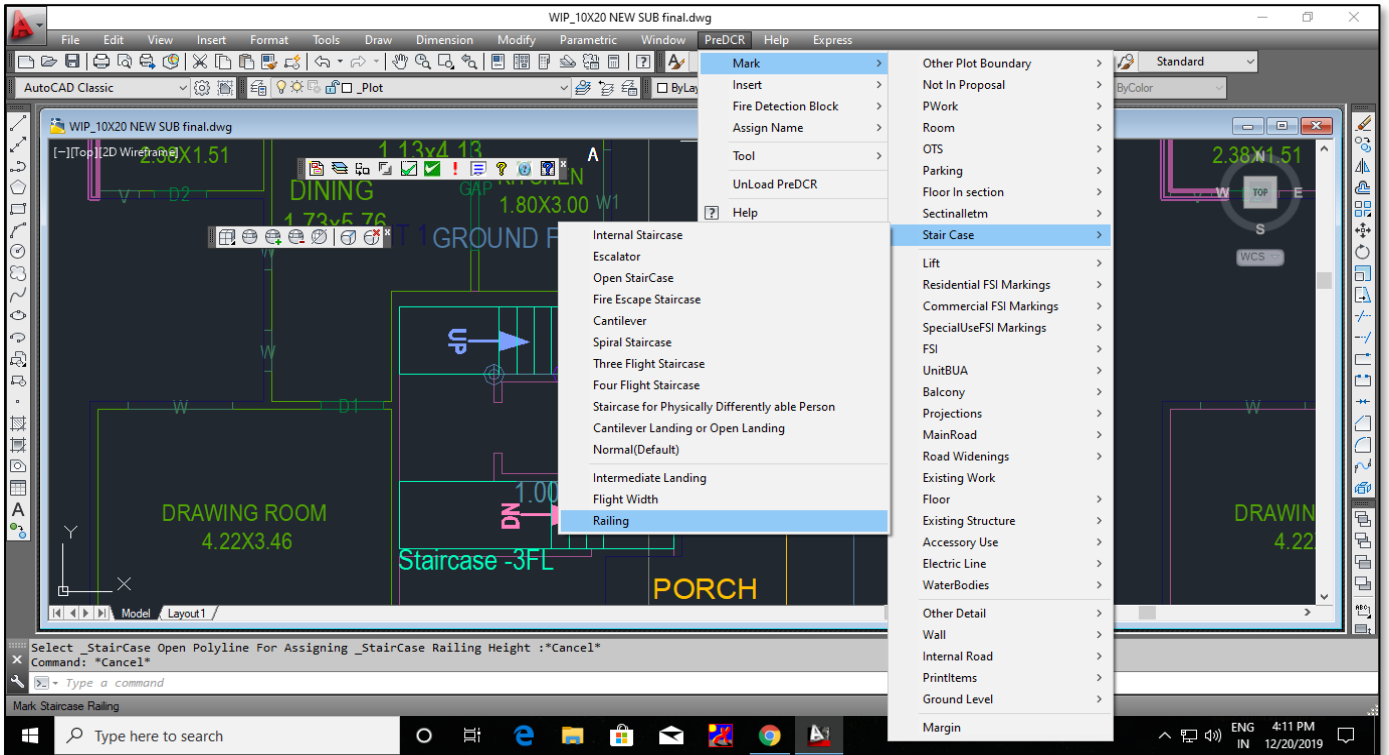


Figure 13: Selecting Railing

- (4) Select `_staircase` open polyline for assigning `_staircase` railing height.

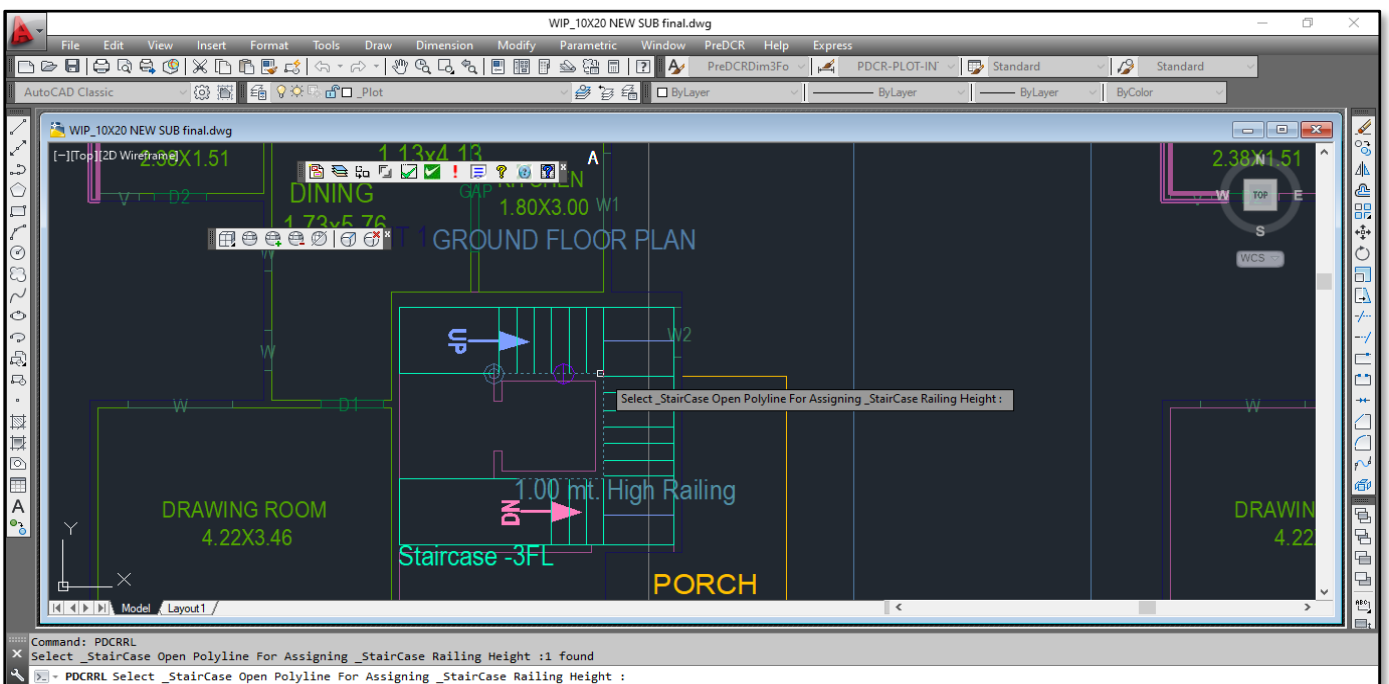


Figure 14: Selecting staircase open polyline layer

- (5) After selection, the Assign dialog box opens. Now, enter the height (in meters). Click OK.

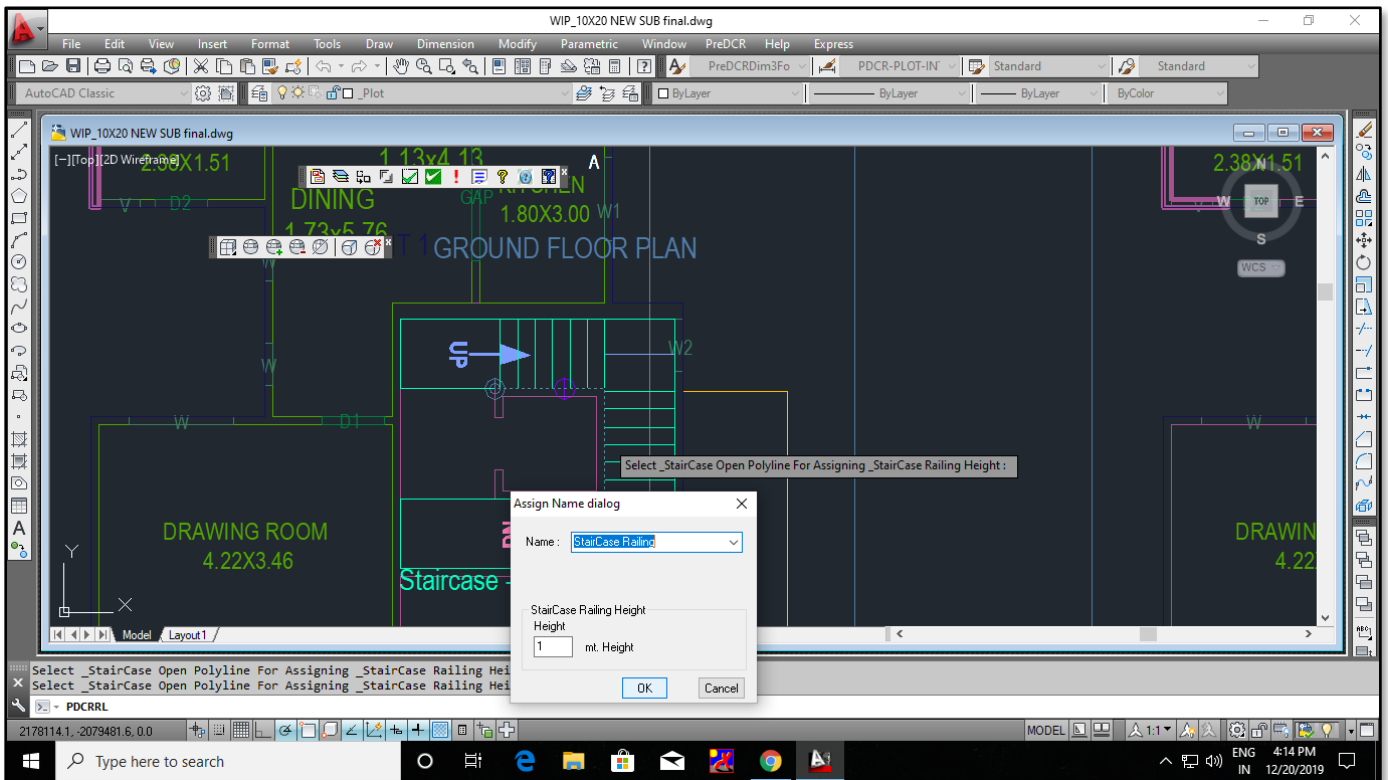


Figure 15: Assigning Name & entering height

5. How to draw OTS?

Ans.:

Follow the below steps to draw the OTS:

- (1) Select _OTS layer from the layer list.
- (2) Draw OTS area as a closed polyline with text on _OTS layer.
- (3) Draw _OTS on all floors including terrace, if it is not drawn, that area will get added to the ground coverage.

6. Why Rear margin is not getting captured in report even if proposed?

OR

What are the direction reference circles? And how to draw them?

Ans.:

- (1) Direction reference points are the common points from the site plan to any floor plans. They decide the orientation of the floors and proposed work. Hence, the position of direction reference circle is must.
- (2) Direction circle must be inserted on each floor of the building and its corresponding proposed work on the same place by using PreDCR → Insert → direction reference circle. One can draw it on common areas of the building such as lobby, staircase, lift etc.
- (3) If the position of direction reference circles is slightly changed then proposed rear margin may not get captured.

□□□